



OKC
LOGISTICS
PARK



FOR LEASE

SW 29TH & S COUNCIL RD., OKLAHOMA CITY, OK

BRETT PRICE, CCIM, SIOR
bprice@newmarkrp.com
C: 405.613.8380

KRIS DAVIS, SIOR
kgdavis@newmarkrp.com
C: 405.202.9525

KARLEY HARPER
kharper@newmarkrp.com
C: 405.371.3498



NEWMARK
ROBINSON PARK

DEVELOPMENT DETAILS

Total Building SF	1,602,687 SF
Lease Rate	Contact Broker
Total Doors	311 dock doors 16 drive in doors
Total Trailer Parks	699
Total Car Parks	1,102
Development Site	115 Acres
Zoning	I-3

DEVELOPMENT OVERVIEW

OKC Logisitics Park is a new industrial park located in the southwest submarket of Oklahoma City just 2 miles south of I-40, 1 ½ miles north of Hwy 152, and less than 5 miles from Will Rogers World Airport. Notable surrounding companies include Hobby Lobby, Amazon, Wal-Mart, FedEx and Rexel.

The park will be developed in two phases. Phase I includes two buildings totaling 1,006,931 square feet on 58 acres±. Estimated completion is Q4 2022. Phase II includes two buildings totaling 595,756 square feet on 56 acres±.

PROPERTY HIGHLIGHTS



Southwest Submarket



New Construction



Surrounding International Tenants



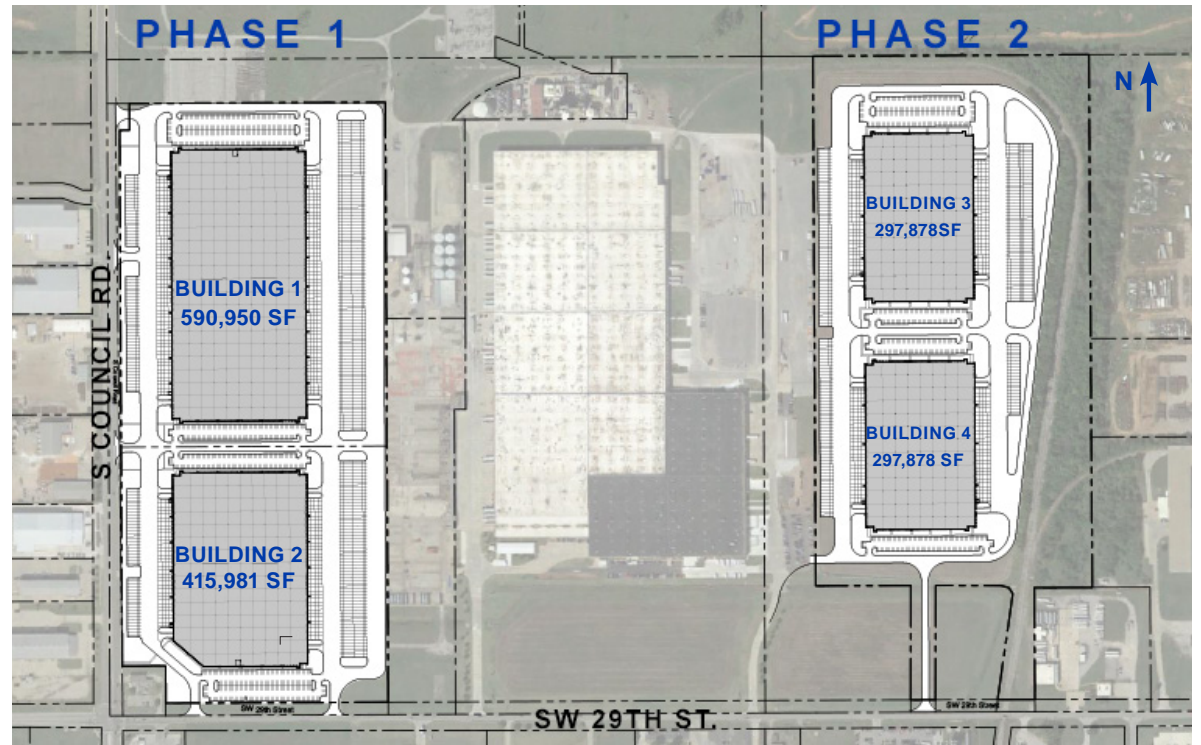
1,102 Total Car Parks

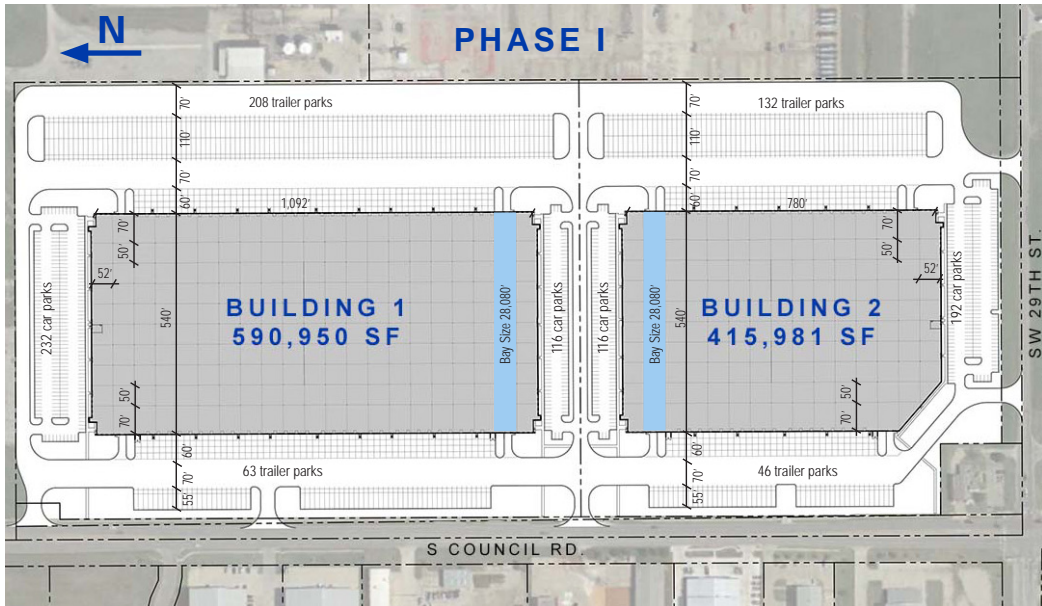


699 Total Trailer Parks



Cross Dock Facility

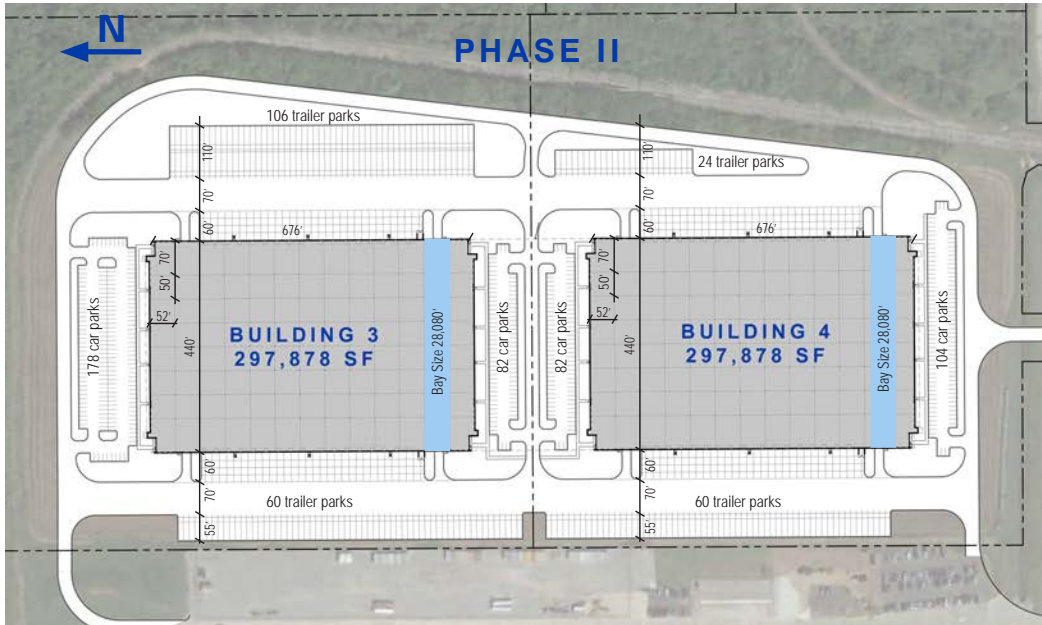




PHASE I BUILDING FEATURES

Building 1	Building 2
590,950 SF	415,981 SF
540' x 1,092'	540' x 780'
52' x 50' column spacing	52' x 50' column spacing
70' speed bay	70' speed bay
Bay size - 28,080'	Bay size - 28,080'
36' clear height	36' clear height
114 dock high doors	69 dock high doors
4 drive in doors	4 drive in doors
185'± truck court	185'± truck court
271 trailer parks	178 trailer parks
348 car parks	308 car parks

The buildings can be combined into 1 for a total of 1,119,572 SF

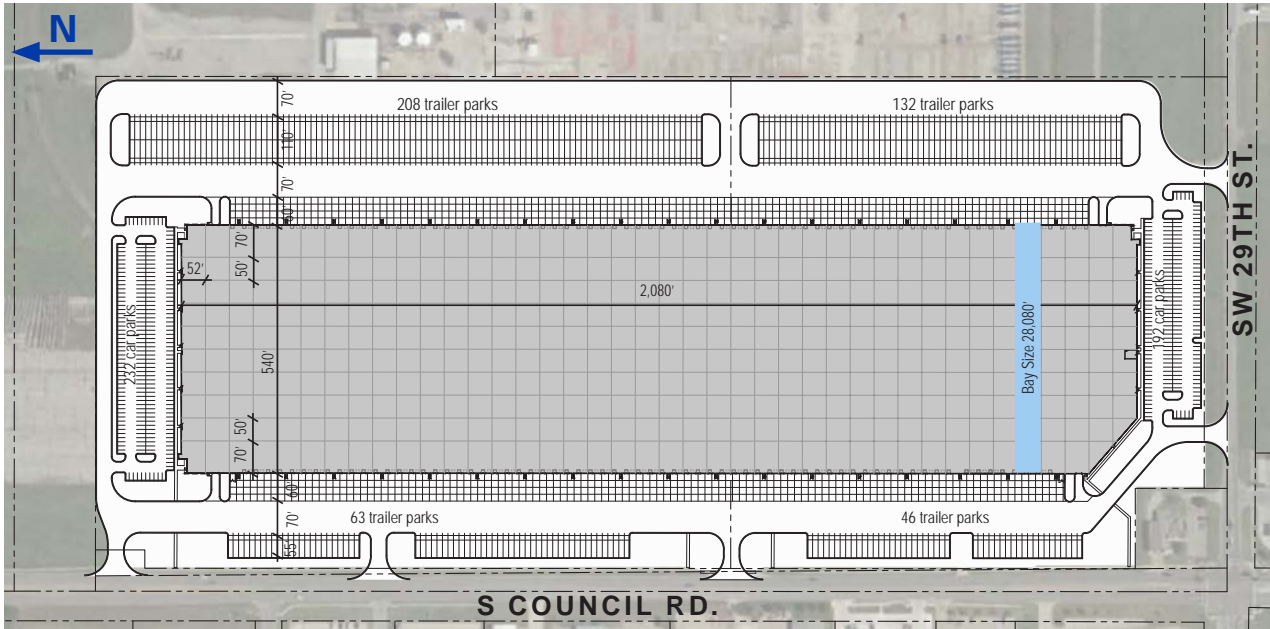


PHASE II BUILDING FEATURES

Building 3	Building 4
297,878 SF	297,878 SF
440' x 676'	440' x 676'
52' x 50' column spacing	52' x 50' column spacing
70' speed bay	70' speed bay
Bay size - 28,880'	Bay size - 28,880'
36' clear height	36' clear height
64 dock high doors	64 dock high doors
4 drive in doors	4 drive in doors
185'± truck court	185'± truck court
166 trailer parks	84 trailer parks
260 car parks	186 car parks

The buildings can be combined into 1 for a total of 710,156 SF

PHASE I ALTERNATE



PHASE I BUILDING FEATURES

1,119,572 SF

540' x 2,080'

52' x 50' column spacing

70' speed bay

Bay size - 28,880'

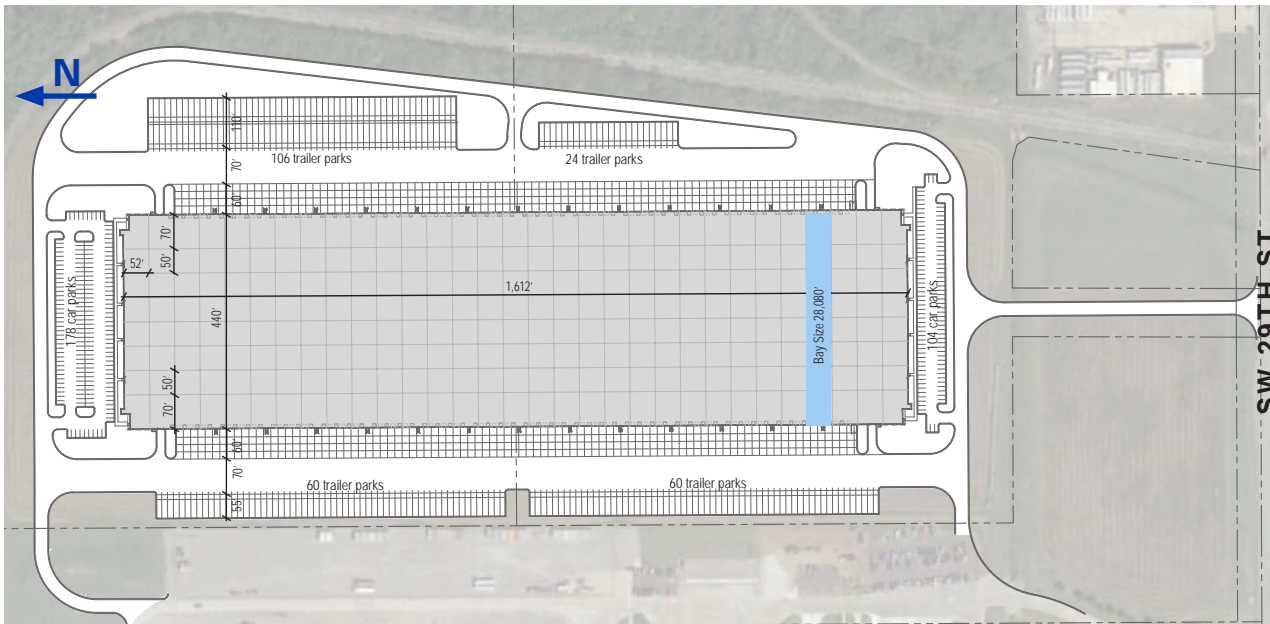
249 dock doors

4 drive-in doors

449 trailer parks

424 car parks

PHASE II ALTERNATE



PHASE II BUILDING FEATURES

710,156 SF

440' x 1,612'

52' x 50' column spacing

70' speed bay

Bay size - 28,880'

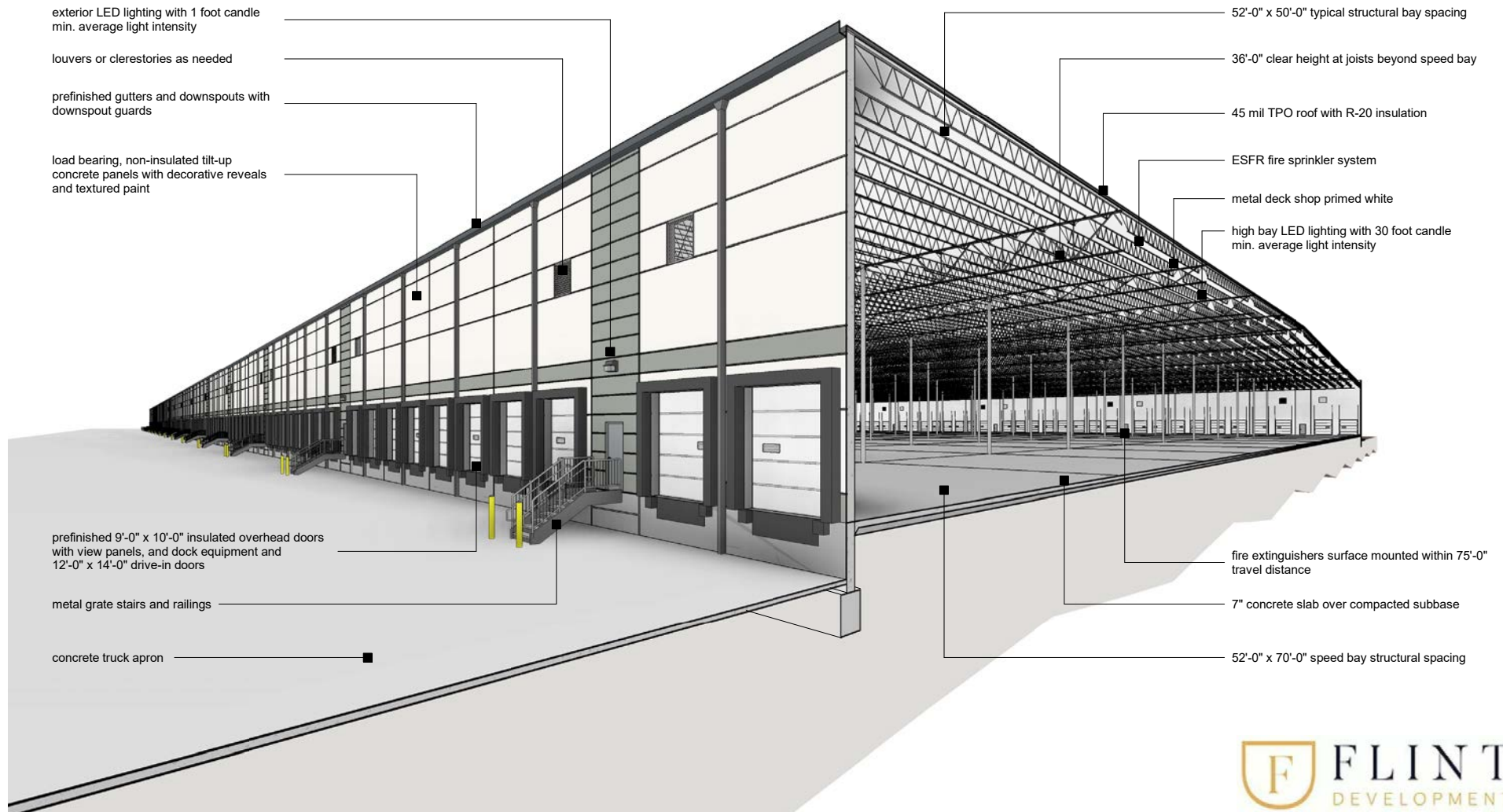
190 dock doors

4 drive-in doors

250 trailer parks

282 car parks

SECTION EXHIBIT





OKC LOGISTICS PARK



FLINT
DEVELOPMENT

204 N. Robinson, Ste 700 OKC, OK, 73102 | for more information, visit us at
110 W. 7th, Ste 2600 Tulsa, OK, 74119 | NEWMARKRP.COM

The information contained herein was obtained from sources believed reliable; however, Newmark Robinson Park makes no guarantees, warranties or representations as to the completeness or accuracy thereof. The presentation of this property is submitted subject to errors, omissions, change of price or conditions prior to sale or lease, or withdrawal without notice. Independently Owned and Operated.